



**DementiaUK**

Helping families face dementia

# Dementia UK

[www.dementiauk.org](http://www.dementiauk.org)

356 Holloway road. London N7 6PA

020 7697 4052

[info@dementiauk.org](mailto:info@dementiauk.org)

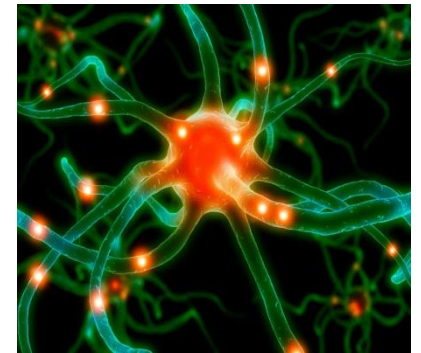
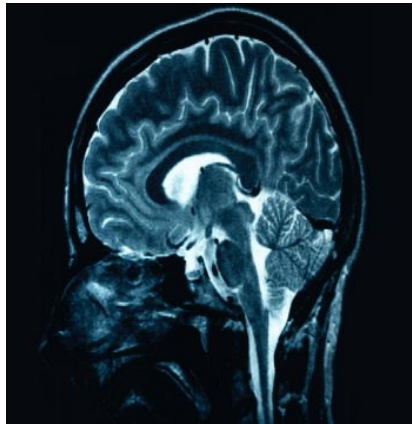
@DementiaUK

Registered Charity Number 1039404

16/06/2017



# Understanding the affects of Dementia



**Maggie Parry-Hughes**  
Admiral Nurse Professional and Practice  
Facilitator

# The brain and dementia

Dementia is a term used to describe a range of signs and symptoms which occur when the brain is affected by various conditions which interfere with normal daily activities.

There are many different types of dementia including:

- Vascular dementia
- Alzheimer's Disease
- Lewy body dementia
- Fronto-temporal (Pick's disease)
- Mixed dementia



No cure but healthy life styles can reduce risks of some dementia's

# What are the signs?

- Loss or lapses of recent memory
  - Mood changes or uncharacteristic behaviour
  - Poor concentration
  - Problems communicating
  - Getting lost in familiar places
  - Making mistakes in a previously learned skill
  - Changes in sleep patterns and appetite
  - Personality changes
  - Visio-spatial perception issues (i.e. the brain does not process images as normal)
-

# Early Diagnosis and support promotes health and wellbeing

Patient's history (to form a picture)

Collection of information: repetitive, misplacing things or forgetfulness, inability to maintain a conversation in a group

Specific memory and functional assessments

Detailed psychometric

Exclude depression

Specific tests – Bloods, CT/MRI scan

# What else can help to promote independence and identity?

Information, education and ongoing support – Local organisations.

Future planning – Advanced decision making, LPA (health and welfare/financial)

Knowledge of the person – Life history 'This is Me'

Maintaining independence/positive risk taking - Environment, Prompts such as labelling (pictures and words)

Hobbies and interests to validate life and purpose.

Keeping active and stimulated – Falls prevention



**DementiaUK**

Helping families face dementia

# **Dementia UK & Admiral Nurses**

[www.dementiauk.org](http://www.dementiauk.org)

356 Holloway road. London N7 6PA  
020 7697 4052

[info@dementiauk.org](mailto:info@dementiauk.org)

@DementiaUK

Registered Charity Number 1039404

16/06/2017



# Who are Dementia UK?

- Registered Charity that offers specialist one-to-one support and expert advice for people living with dementia through our specialist Admiral Nurses.
- They were named by the family of Joseph Levy CBE BEM, who founded the charity. Joseph had vascular dementia and was known affectionately as “Admiral Joe” because of his love of sailing.
- Dementia UK believe that everyone who needs the support of an Admiral Nurse should get one.



*Admiral Joe*



# What is an Admiral Nurse?



Registered nurses who have specialist knowledge of dementia care

Provide support to family carers and people living with dementia throughout the journey of dementia, particularly during complex situations

Provide education, leadership, development and support to other colleagues and service providers

# A day in the life of an Admiral Nurse

We followed Admiral Nurse Matthew Burns as he visits two families he works with.

Matthew's post in Wakefield was achieved by community fundraisers in the local area.

[Watch video](#)



# Admiral Nursing - practice settings




Community



Care homes




Admiral  
Nursing  
Direct



Acute  
hospital



Home care



Hospice



# Admiral Nursing Dementia Helpline

- Admiral Nursing Direct is the only nurse led dementia helpline in the country.
- Admiral Nursing Direct is open to families and carers for people with dementia, professionals and people living with dementia who have questions or concerns.
- The helpline is open **seven days a week**
  - [helpline@dementiauk.org](mailto:helpline@dementiauk.org)
  - Tel: 0800 888 6678